

# **-150°C** **Cryo Freezer** **DW-150W209**



## **Scope of Application :**

This product is suitable for the ultra low temperature storage of products in applications such as clinical, pharmaceutical, scientific research, and epidemic institutions. It also can be used in blood stations, hospitals, centers for disease control, science and research institutions, electronic and chemical laboratories, biomedical engineering institutions, and pelagic fishery companies to store red blood cells, viruses, germs, skin, bones, bacteria, sperm, biological products, electronic components, and low temperature testing samples of special products as key examples.

## **Innovative Design**

- Hydrocarbon energy saving
- Safe and reliable
- Intelligent control
- Low noise

## **Qingdao Haier Biomedical Co.,Ltd.**

No.280 Feng Yuan Road, High-tech Zone,  
Qingdao, 266109, P.R. China  
Tel: +86-0532-88935593  
E-mail: [inquiry@haierbiomedical.com](mailto:inquiry@haierbiomedical.com)  
Website: [www.haiermedical.com](http://www.haiermedical.com)



Haier Biomedical  
International



Haier Biomedical  
International



@haiermedicalint







Haier Biomedical  
International




Haier Biomedical  
International

## Product Advantages

-  **Hydrocarbon energy saving**
  - Imported brand compressor, hydrocarbon refrigerant, dual-compressors 4-stage cascade refrigeration system, high efficiency and energy saving
  - Imported brand efficient fan, intelligent start and stop
-  **Environmentally friendly**
  - HC refrigerant, truly fully environmentally friendly refrigeration system, GWP=0
  - LBA polyurethane foam, environmental protection
-  **Superior Uniformity**

The temperature is more uniform, set -150°C, the difference between the highest temperature and the lowest temperature in the box is less than 10°C
-  **Safe, Secure and Reliable**

The standard ambient temperature ranges from 10°C to 32°C. The pressure state of the system can be automatically adjusted by the pressure controller to prevent the pressure from being too high to effect the freezer operation. Multiple alarms, including high and low temperature, power failure, door ajar, hot condenser, low battery, sensor error, and high ambient temperature.
-  **Low noise**

Optimized system and structure noise reduction design, the noise 55 dB (A)

## Functional Details

### Integrated stainless steel hinge

Door opening angle > 45° can stop  
One 25mm diameter test hole



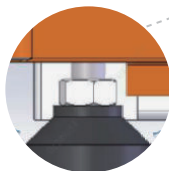
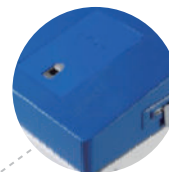
### Ergonomic design

LCD screen operation plane  
slope 8°



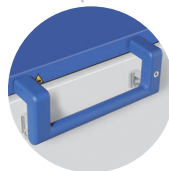
### Electric control function

Standard USB. Optional fingerprint lock,  
NFC card lock



### Adjustable foot

Large adjustable feet,  
easy to level



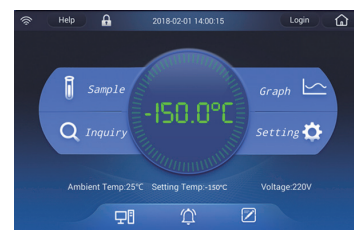
### Integrated handle

Cast aluminum handle, handle and box  
spacing > 45mm, easy to grasp



### Magnetic front cover

Screwless design, easy to remove and  
clean the filter



## Product Details

### • Microprocessor controller

Equipped with a microprocessor controller and a 10.1 inch LCD screen with display accuracy at 0.1°C to show the cabinet and ambient temperature, voltage and other data clearly. The temperature inside the cabinet is adjustable from -130°C to -150°C.

### • Safe and secure

Integrated handle, standard equipped with key lock and padlock, with optional electromagnetic lock and fingerprint lock, providing multiple safeguards for sample safety.

### • Large capacity USB

Enables users to download historical temperature data of the past 10 years for compliance and auditing purposes.

### • Backup power, extended standby

Equipped as standard with two (2) lithium batteries which allows extended information/data availability, even after power cutoff.

### • Multiple alarms

With high and low temperature alarm, sensor error, hot condenser, power failure, low battery, door ajar, high ambient temperature and other alarm functions.

### • Superior insulation performance

Wide cabinet opening design, outer door multi-layer sealing, standard with two inner doors, to prevent the loss of cold; Cabinet VIP+ polyurethane foam 140mm.

### • Compatible with freezer racks design

The height of the inner is increased, which can be compatible with various kinds of freezer racks.

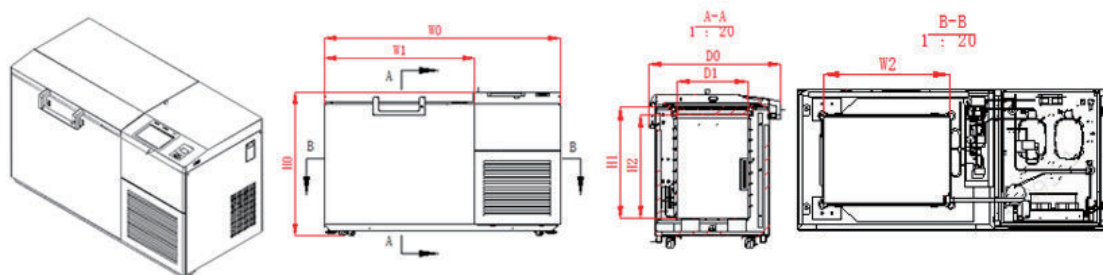
### • Networking functions

A standard RS485 port is configured for multiple refrigerators.

### • Anti-condensation design

Built-in cabinet heating wire can quickly eliminate the cabinet opening condensation.

## Product Dimension Drawings



Remark  
W0-Total Width  
W1-Cabinet Width  
W2-Inner Cabinet Width  
D0-Total Depth  
D1-Inner Cabinet Depth  
H0-Total Height  
H1-Cabinet Height  
H2-Inner Cabinet Height

Model	Code	W0	W1	W2	H0	H1	H2	D0	D1
DW-150W209		1650mm	1050mm	667mm	1008mm	727mm	677mm	865mm	462mm

## Specifications



Model	DW-150W209		
Technical Data	Cabinet type		Chest
	Climate class		N
	Cooling type		Direct cooling
	Defrost mode		Manual
	Refrigerant		HC
	Sound level (dB(A))		55
Performance	Cooling performance (°C)		-150
	Temperature range (°C)		-130 ~ -150
Control	Controller		Microprocessor
	Display		LCD
Electrical Data	Power supply (V/Hz)		220~240/50
	Power (W)		1600
	Max power draw (W)		1750
	Electrical current (A)		10
	Capacity (L/Cu.Ft)		209/7.4
Dimensions	Net/gross weight (approx)	kg	260/295
		lbs	573.2/650.4
	Interior dimensions (W*D*H)	mm	667*462*677
		in	26.3*18.2*26.7
	Exterior dimensions (W*D*H)	mm	1650*850*1010
		in	65.7*33.5*39.8
	Packing dimensions (W*D*H)	mm	1810*940*1190
		in	71.3*37.0*46.9
	Container load (20'/40'/40'H)		6/13/13
Functions	High/Low temperature		Y
	Hot condenser		Y
	Power failure		Y
	High/Low voltage		Y
	Sensor error		Y
	Low battery		Y
	High ambient temperature		Y
	Door ajar		Y
	Start-up delay		Y
Accessories	Caster		Y
	Foot		Y
	Porthole		Y/1
	Inner doors		-/2
	USB interface		Y
	Remote alarm		Y
	5V power supply port		Y
	Temperature chart recorder		Optional
	RS485 port		Y
	LN2 backup system		Optional
Certification	CE		Y